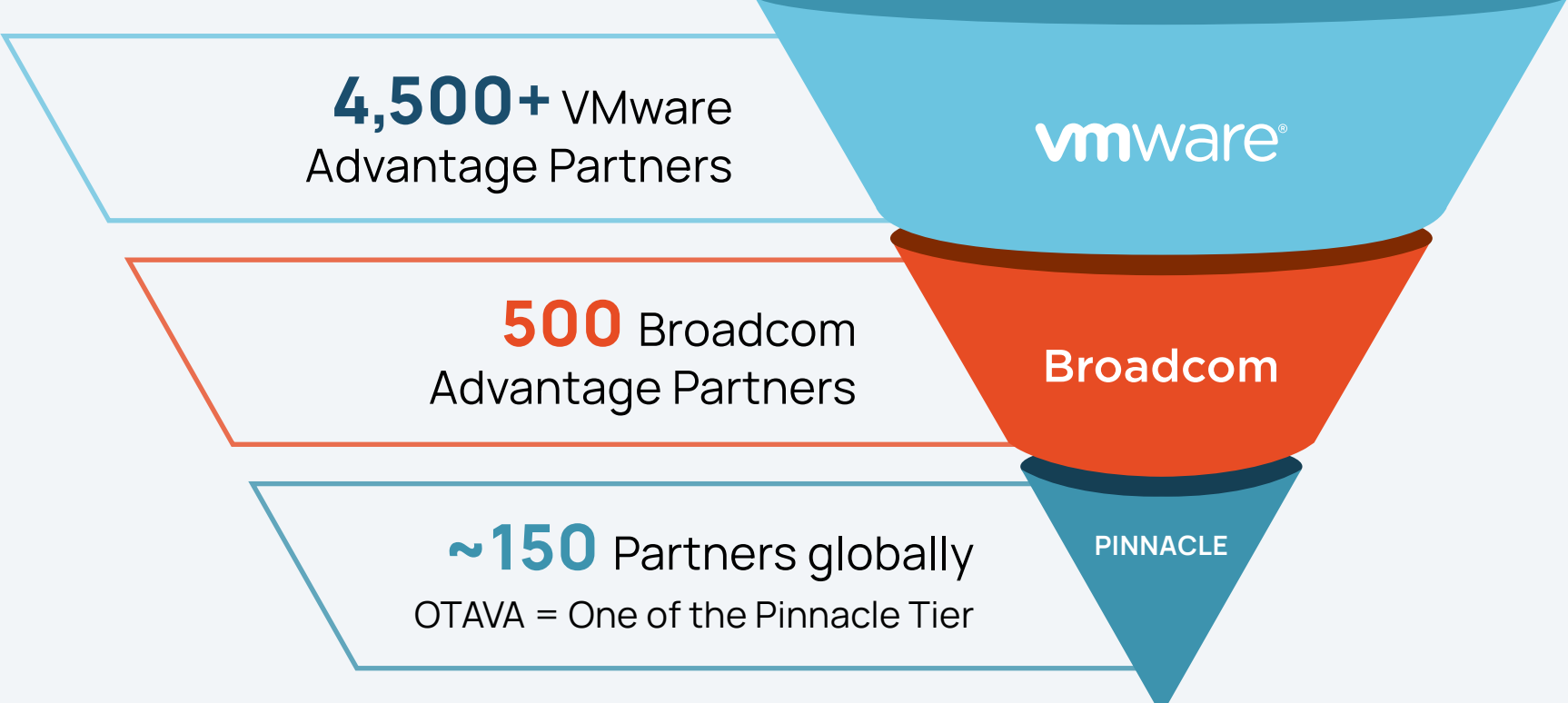


Your Next VMware Cloud Partner, by the Numbers

THE SHRINKING PARTNER ECOSYSTEM

From 4,500 to a Few: The VMware Program Shakeup



Broadcom's restructuring slashed program access by **nearly 90%**. OTAVA was invited to stay and help displaced MSPs move forward with confidence.

WHAT OTAVA OFFERS

Dedicated VCF Infrastructure. Free for 3 Months, Plus Free Migration

- | | |
|---|--------------------------------|
| 10 dedicated hosts | Cloud backup for 250 VMs |
| 250 TB Tier 2 storage | 250 TB backup storage |
| Enterprise-grade firewalls (NSX or FortiGate) | M365 backup |
| VMware + Windows OS licensing | Bandwidth & Onboarding Support |

Start strong, scale smart – without disrupting service or budget.

Discounted rates with a 1-year commitment after

THE BROADCOM COUNTDOWN

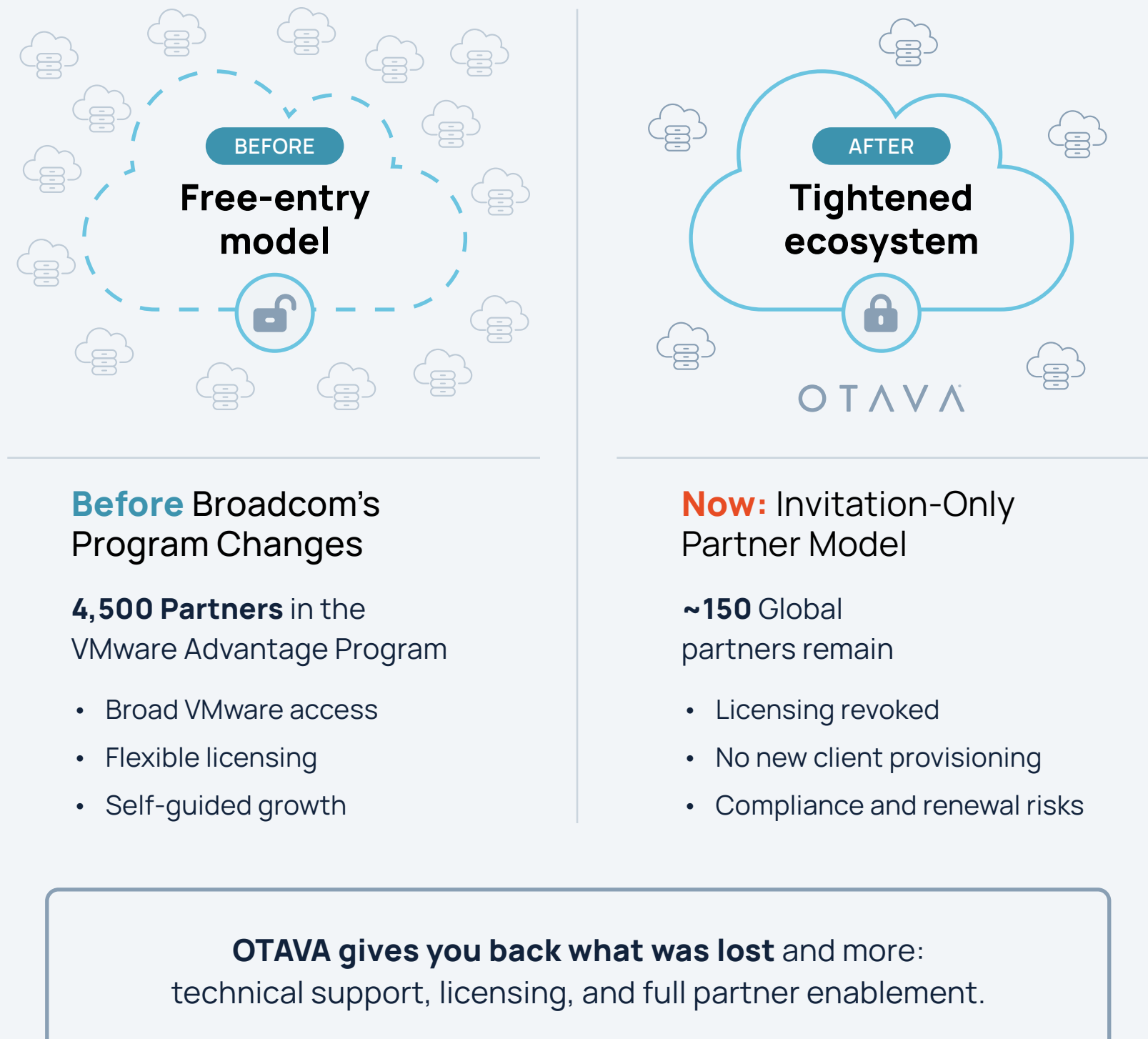
5 Critical Dates MSPs Can't Miss

Licensing limbo is real. Use this timeline to stay in control.



BEFORE & AFTER – PARTNER PROGRAM SHIFT

A Changed Landscape: What MSPs Are Losing – and How OTAVA Fills the Gap



WHY CHOOSE OTAVA?

More Than a Provider: A True Partner for Partners

- | | |
|---|------------------------------------|
| Authorized VMware Cloud Foundation provider | Wholesale pricing |
| No-poaching policy | Dedicated engineering and presales |
| White-labeled cloud and DRaaS | SOC 2, HIPAA, PCI, ISO compliant |

OTAVA powers your cloud while you keep the client relationship and the margin.

The partner program may be shrinking, but your opportunities don't have to.

Talk to OTAVA today to protect your customers and revenue, migrate with confidence, and grow your MSP practice.

Get Started Today